

## EXCLUSIVE SAVINGS FROM ASEQ NETWORK PARTNERS\*

### Saving You More Money!

- Your Coverage**  
You're covered for the insured portion of your Plan regardless of the health-care practitioner you choose.
- Using the ASEQ Networks**  
By consulting a Network member, you'll get additional coverage.

Here is an example of a claim made using an ASEQ Dental Network practitioner:



**LASIK MD**  
VISION

**\$50 OFF/EYE**  
ON STANDARD LASIK\*

**\$100 OFF/EYE**  
ON CUSTOM LASIK\*

\*Certain conditions apply.

ASEQ Montreal  
Vision Network

**\$65**  
EYE EXAMS

**\$75 OFF**  
PRESCRIPTION EYEGLASSES  
(FRAMES AND LENSES)

Discover more partners online!  
DENTISTS, PHYSIOTHERAPISTS, AND CHIROPRACTORS

### MENTAL HEALTH RESOURCES

Programme d'aide en santé étudiante  
CALL 1-833-202-4570 TO CONNECT WITH CONSULTANTS, COUNSELLORS, AND LIFE COACHES 24/7 FROM ANYWHERE IN NORTH AMERICA. VISIT [WWW.ASEQ.CA](http://WWW.ASEQ.CA) FOR MORE INFO.

Powered by Aspiria

\*ASEQ and the insurers do not endorse or assume any responsibility with respect to the use of their services.

## QUESTIONS? CONTACT US



**Member Services Centre**  
1200 McGill College Avenue  
Suite 2200  
Montreal, Quebec H3B 4G7  
**514-789-8773 / 1-866-795-4433**  
[www.aseq.ca](http://www.aseq.ca)

**NOTE:** This document provides a summary of Plan benefits. It is not a complete description of coverage, restrictions, and exclusions. Please visit [www.aseq.ca](http://www.aseq.ca) to learn about all the applicable conditions and exclusions.

### THE MOST POPULAR COVERAGE ON CAMPUS

As a student at Polytechnique Montréal and a member of the AÉCSP, you have access to one of the most important services on campus, the AÉCSP Student Health & Dental Plan. It covers many benefits not provided by provincial health-care programs, like vision care, dental care, and travel health coverage. If you're an international student, you have access to the dental portion of the Plan only, unless you have a provincial health-care card (RAMQ). Visit [www.aseq.ca](http://www.aseq.ca) for details.

We invite you to verify if you're already covered by another plan (through an employer, parent, or spouse). If so, the student Plan can still be of interest to you, as you can be reimbursed the remaining eligible fees (partially or fully) through your secondary plan.



**Desjardins Insurance**  
PO Box 3950  
Levis, Quebec G6V 8C6  
**1-866-647-5013**  
Health, vision, and dental benefits are insured by Desjardins Insurance.  
Group Number: Q1118  
Desjardins Insurance refers to Desjardins Financial Security Life Assurance Company.



**Blue Cross**  
PO Box 1046, Stn. Main  
Winnipeg, Manitoba R3C 2X7  
**1-866-601-2583 (toll-free): Canada/United States**  
**0-204-775-2583 (collect): other countries**  
Travel coverage is administered by Blue Cross.  
Group Number: 97180

To decide if this product is right for you, visit [www.aseq.ca](http://www.aseq.ca) for more details or to contact a licensed insurance representative.



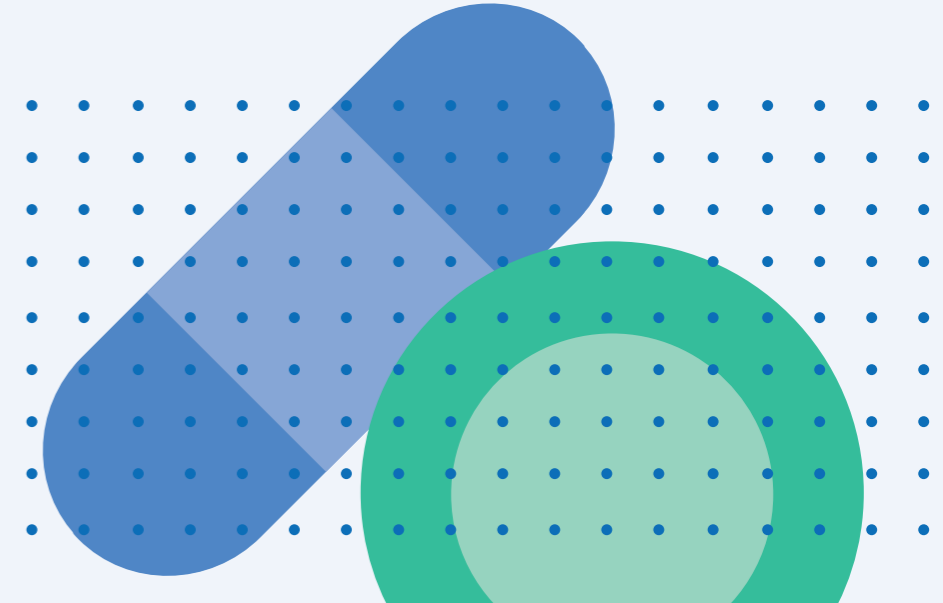
**OUR ENVIRONMENTAL COMMITMENT ON PAPER**  
This document contains 100% post-consumer fibre, Certified EcoLogo, Processed Chlorine Free, and FSC® Certified Recycled. Manufactured using biogas energy.

ASEQ\_BRO\_AÉCSP\_EN\_09-19



## 2019-2020 YOUR AÉCSP STUDENT HEALTH & DENTAL PLAN

Enjoy it while it lasts



## PROVIDING QUALITY COVERAGE

### HEALTH PLAN



**HEALTH  
OVER \$10,000**

Oral contraceptives  
Antidepressants  
Vaccinations  
Psychologists

Physiotherapists  
Chiropractors  
Ambulance  
and more!



**VISION  
OVER \$450**

Eye exam  
Eyeglasses and contact lenses  
Accident coverage for eyeglasses  
Laser eye surgery

### TRAVEL PLAN



**TRAVEL  
UP TO \$5,000,000**

120 days per trip, up to \$5,000,000 per lifetime, trip cancellation and trip interruption in the event of a medical emergency

### LEGAL PROTECTION PROGRAM



A toll-free legal assistance helpline for all legal questions: **1-855-535-3208**

Plus, a lawyer will take charge of proceedings related to the following areas of law:

Housing  
Employment  
Academic  
Civil mediation between individuals  
Human rights  
Small claims support

FOR A COMPLETE DESCRIPTION OF YOUR COVERAGE AND TO OBTAIN YOUR CERTIFICATE NUMBER, VISIT [WWW.ASEQ.CA](http://WWW.ASEQ.CA).

### DENTAL PLAN



**DENTAL  
UP TO \$1,000**

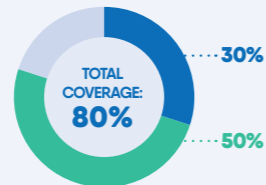
Checkups  
Cleanings  
Fillings

Extractions  
and more!

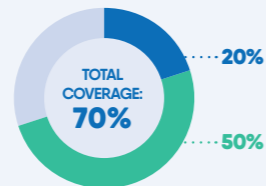
- Insured Portion
- ASEQ Dental Network Savings

#### PREVENTIVE SERVICES

- Recall exams
- Cleanings

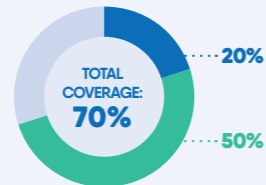


#### EXTRACTION OF IMPACTED TEETH



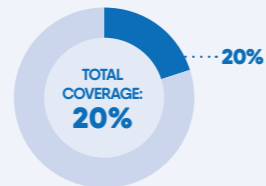
#### BASIC SERVICES

- Minor restorative (fillings)
- Oral surgery
- Endodontics (root canals)
- Periodontics (gum treatments)



#### MAJOR RESTORATIVE

- Crowns
- Bridges

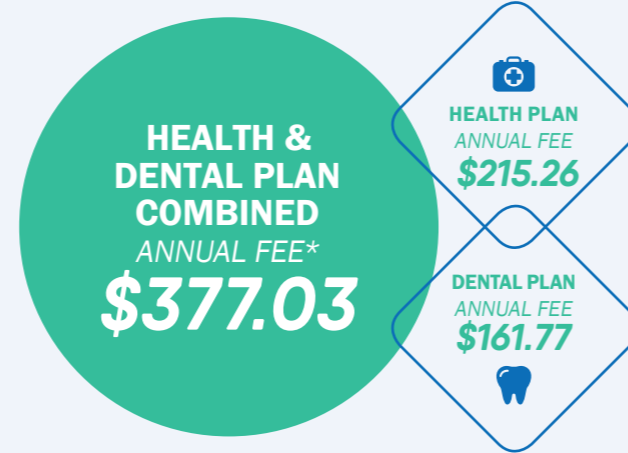


WHAT ARE YOU WAITING FOR?

MAKE THE MOST OUT OF IT!

## AT A GREAT PRICE

### CHECK IT OUT!



FALL 2019 FEE  
**\$125.68**

HEALTH PLAN  
**\$71.75**

DENTAL PLAN  
**\$53.93**

WINTER 2020 FEE  
**\$251.35**

HEALTH PLAN  
**\$143.51**

DENTAL PLAN  
**\$107.84**

\*This is an annual Plan. Students will therefore be covered for one year. If you begin your studies in the winter, you may make an opt-out or change-of-coverage request in the Winter semester.



FALL 2019 COMBINED FEE  
(September–December)  
**\$125.68**

WINTER 2020 COMBINED FEE  
(January–August)  
**\$251.35**

### INTRODUCE ME TO YOUR FAMILY

Enrol loved ones for less

You can enrol your family (spouse and/or dependent children) each year by paying an additional fee, over and above your fee as a member of the Plan. Common law and same-sex couples are eligible. Visit [www.aseq.ca](http://www.aseq.ca) for instructions.

**+1** ADD ONE DEPENDANT FOR **\$377.03** FOR FULL-YEAR COVERAGE\*

**∞** ADD UNLIMITED DEPENDANTS FOR **\$754.06** FOR FULL-YEAR COVERAGE\*

\*Family enrolment fees for coverage from Jan. 1 – Aug. 31, 2020 for new Winter semester students are available at [www.aseq.ca](http://www.aseq.ca).

## THE EASE OF CLAIMING AT YOUR FINGERTIPS

### QUICK CLAIMING & REIMBURSEMENT

Five Easy Steps:

1. **CREATE A PROFILE.**
2. **TAKE A PICTURE OF YOUR RECEIPT WITH YOUR DEVICE.**
3. **SEND IT TO YOUR INSURER VIA THE APP.**
4. **WAIT FOR YOUR CLAIM TO BE QUICKLY PROCESSED.**
5. **RECEIVE A REFUND BY DIRECT DEPOSIT.**



Claim forms are also available online at [www.aseq.ca](http://www.aseq.ca).

### CHANGE-OF-COVERAGE AND OPT-OUT PERIODS

- ▶ Fall semester students:  
**SEPTEMBER 11 – OCTOBER 11, 2019**
- ▶ New Winter semester students only:  
**JANUARY 17 – FEBRUARY 18, 2020**

The Plan is a non-mandatory automatic contribution.

All opt outs or coverage changes can be completed online at [www.aseq.ca](http://www.aseq.ca). You can choose between an annual or a permanent opt out.

VISIT  
[WWW.ASEQ.CA](http://WWW.ASEQ.CA)